
Determining Reasonable Domains and Ranges (Verbal/Graph)

Name:

Date:

Vocabulary Review :

In your own words, define each of the following vocabulary terms.

- Function

- Coordinates

- Graph

- Polygon

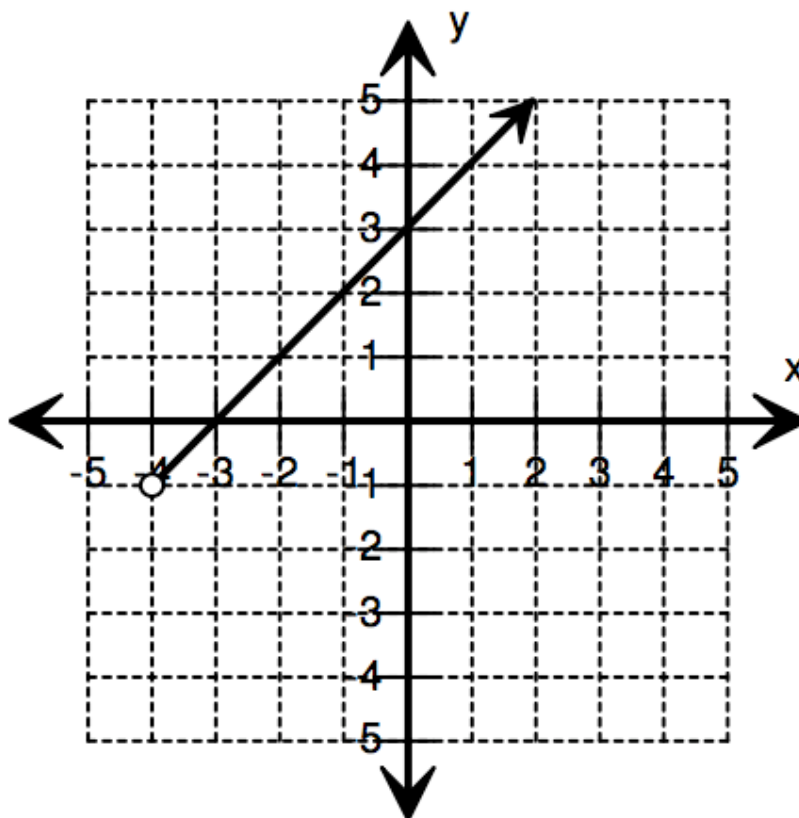
- Perimeter

Apply New Learning:

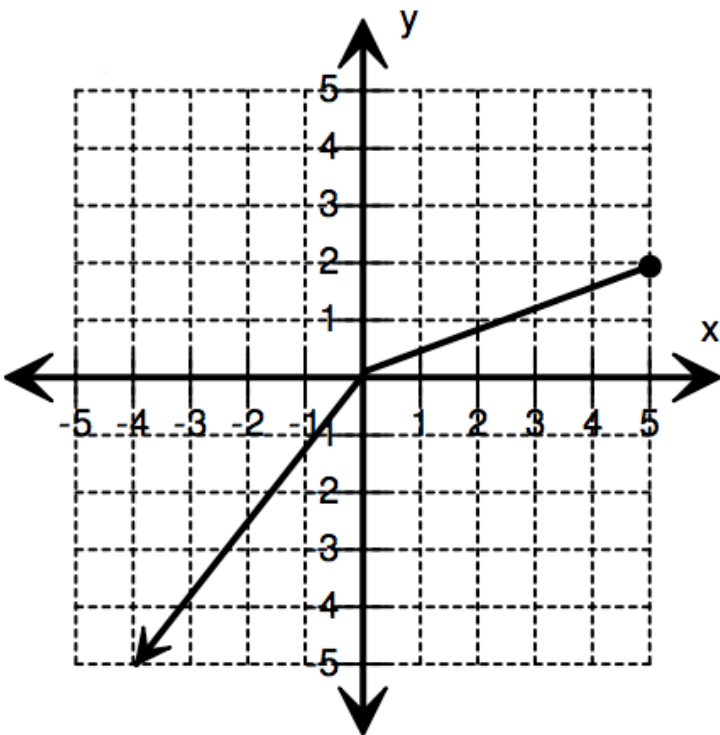
1. What is the domain of a function and how can it be determined?

2. What is the range of a function and how can it be determined?

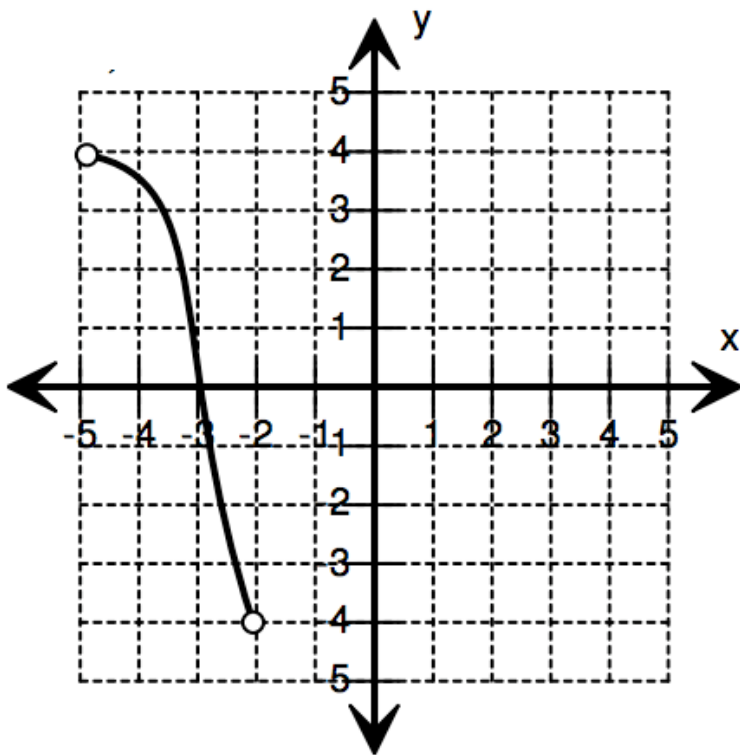
3. What is the domain and range of this function?



4. What is the domain and range of this function?



5. What is the domain and range of this function?



6. Each package of fruit candy contains 12 pieces, 3 of each flavor. The number of s candies in p packages can be expressed by the function $s = 12p$. Identify the domain and range of this function.

7. Ian stops by a convenience store to buy a slushie every day after school. Sometimes he buys them on the weekend, too. Slushies cost \$2. Identify the set to describe t , the total amount Ian spends on slushies each week and s , the number of slushies that he orders.