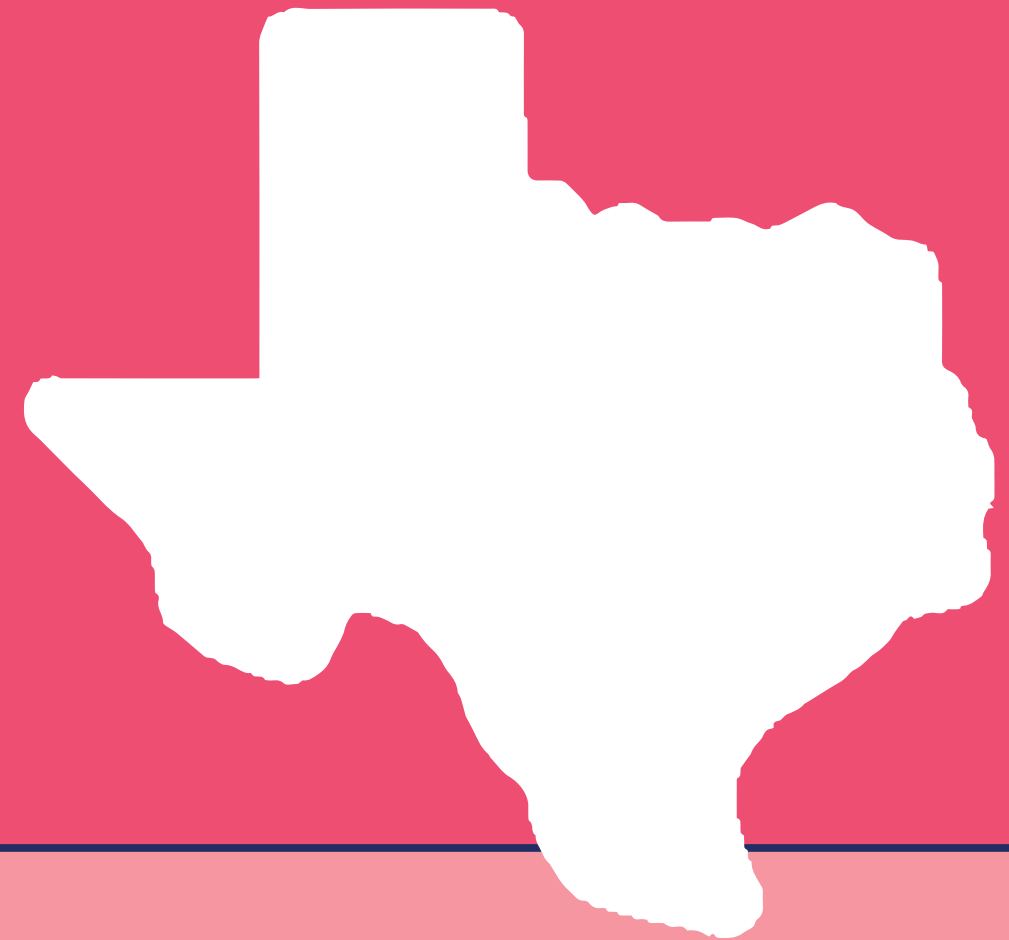


PLANTS: HOW DO THEY GROW?



Kindergarten

Unit 4

Plants: How Do They Grow

Digital Components

Acknowledgement:

Thank you to all the Texas educators and stakeholders who supported the review process and provided feedback. These materials are the result of the work of numerous individuals, and we are deeply grateful for their contributions.

Notice: These learning resources have been built for Texas students, aligned to the Texas Essential Knowledge and Skills, and are made available pursuant to Chapter 31, Subchapter B-1 of the Texas Education Code.

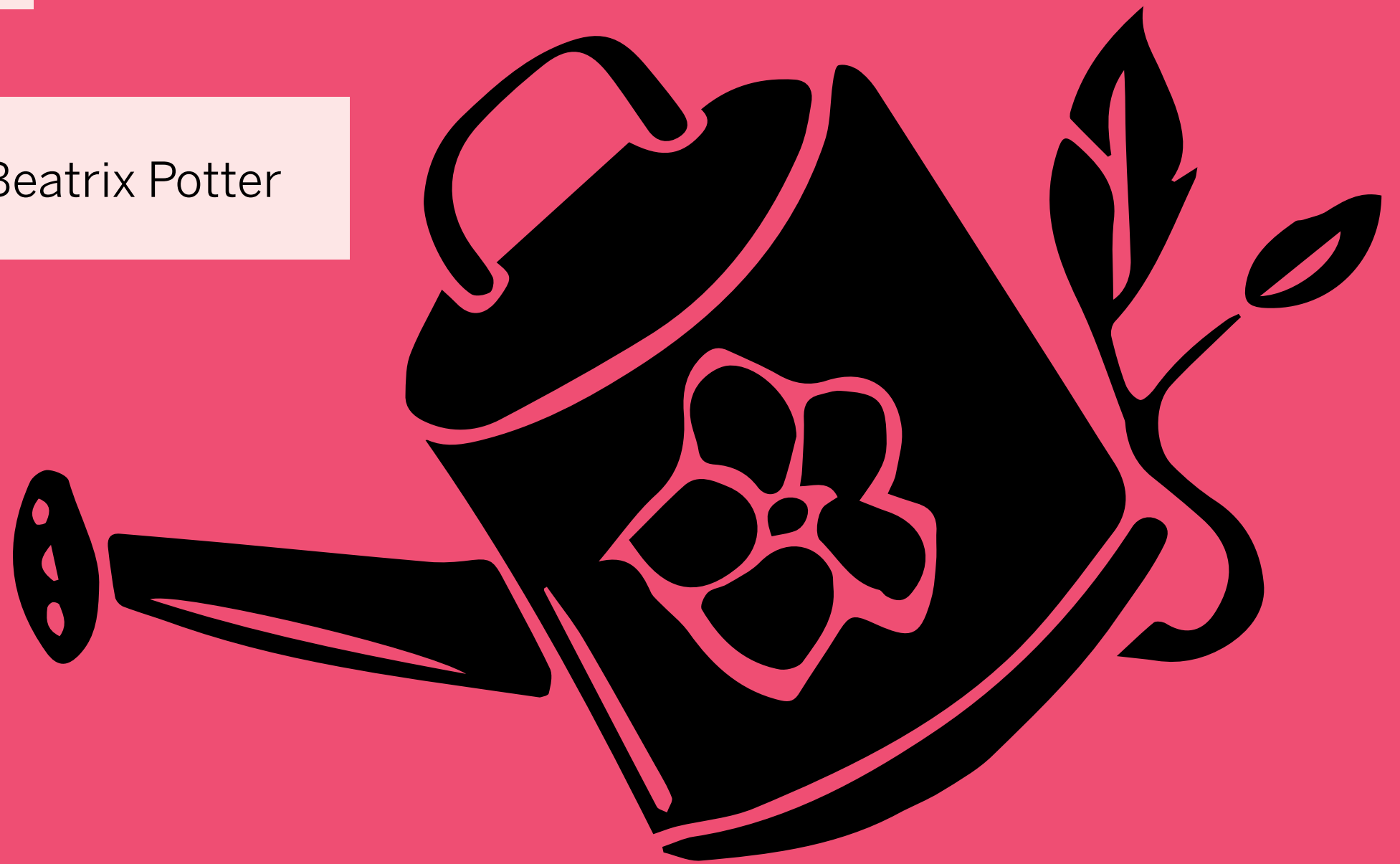
If you have further product questions or to report an error, please email **openeducationresources@tea.texas.gov**.

Table of Contents

Pausing Point:
Poetry Supplement: “We Have a Little Garden” by Beatrix Potter1

POETRY

“We Have a Little Garden” by Beatrix Potter



Introduction



Today we are going to read a poem about a garden.

It uses some special vocabulary words that describe plants.

To sow a seed means to plant it.

When a plant is *blighted*, it is sick.

As I read, listen to learn what happens in the garden and how the gardeners feel about it.

Read “We Have a Little Garden”
by Beatrix Potter aloud.

The poem can be found in the Teacher Resource section of the Teacher Guide.

What happens in the garden?

How do the gardeners feel about it? How do you know?

What happens in the garden?

The seeds get planted, watered, and tended.

How do the gardeners feel about it?

They love the garden and take care of it.

How do you know?

The poem says they love it and water the seeds.

Reading



When we studied nursery rhymes, we learned about **rhyming words**.

What are words that **rhyme**?

Words that have different beginning sounds but end with the same sound are said to rhyme.

Example: cat/hat, big/pig, coat/goat, bake/take

I will read the poem again.

This time, listen for rhyming words.

Read “We Have a Little Garden”
by Beatrix Potter aloud.

The poem can be found in the Teacher Resource section of the Teacher Guide.

What rhyming words did you hear?

Rhyming words:

<i>own</i>	<i>sown</i>
<i>care</i>	<i>there</i>

I will read the poem one more time. After I read a line, you will repeat it.

Listen for where the rhyming words appear. Are they at the beginning of a line, in the middle of a line, or at the end of a line?

Read “We Have a Little Garden”
by Beatrix Potter aloud.

The poem can be found in the Teacher Resource section of the Teacher Guide.

Raise your hand if you believe the rhymes appeared
at the beginning of a line
in the middle of a line
at the end of a line

If you voted for the end of a line, that’s right!

In this poem, the rhyming words are at the end of the lines.

Wrap-Up



Now you will make your own rhyme.

In the poem you heard the word *day*.

Turn to your partner and whisper a word that rhymes with *day*.

Answer



Here are some words that rhyme with *day*. Raise your hand if I name the word you whispered to your partner.

ray way say may

Can you think of any others?

ISBN 979-8-89072-436-6

© 2024. Texas Education Agency. Portions of this work are adapted, with permission, from originals created by

Amplify Education, Inc. (amplify.com) and the Core Knowledge Foundation (coreknowledge.org).

This work is licensed under a

Creative Commons Attribution-NonCommercial-ShareAlike

4.0 International License.

You are free:

to Share—to copy, distribute, and transmit the work

to Remix—to adapt the work

Under the following conditions:

Attribution—You must attribute any adaptations of the work in the following manner:

This work is based on original works of the Texas Education Agency, as well as prior works by Amplify Education, Inc. (amplify.com) and the Core Knowledge Foundation (coreknowledge.org) and is made available under a Creative Commons Attribution-NonCommercial-ShareAlike 4.0 International License. This does not in any way imply endorsement by those authors of this work.

Noncommercial—You may not use this work for commercial purposes.

Share Alike—If you alter, transform, or build upon this work, you may distribute the resulting work only under the same or similar license to this one.

With the understanding that:

For any reuse or distribution, you must make clear to others the license terms of this work. The best way to do this is with a link to this web page:

<https://creativecommons.org/licenses/by-nc-sa/4.0/>

Trademarks and trade names are shown in this book strictly for illustrative and educational purposes and are the property of their respective owners. References herein should not be regarded as affecting the validity of said trademarks and trade names.

This work is based on prior works of Amplify Education, Inc. (amplify.com) and the Core Knowledge Foundation (coreknowledge.org) made available under a Creative Commons Attribution- NonCommercial-ShareAlike 4.0 International License. This does not in any way imply endorsement by those authors of this work.

Printed in the USA

**PLANTS:
HOW DO THEY GROW?
KINDERGARTEN UNIT 4** | DIGITAL COMPONENTS

EDITION 1

